

**PG CBCS**  
**M.SC. Semester-III Examination, 2021**  
**ZOOLOGY**  
 PAPER: ZOO 396A (SPL PRAC)  
**(PRACTICAL)**

**Full Marks: 50**

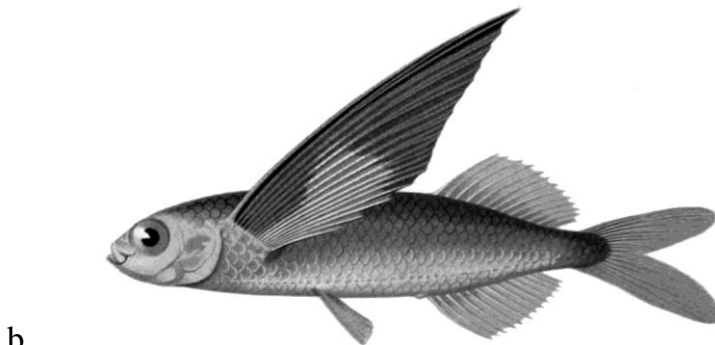
**Time: 3 Hours**

*Candidates are required to give their answers in their own words as far as practicable.*

Answer **TWO** questions of the following:

**2X25=50**

1. i) Identify the given specimen with systematic position and identifying characters. 5X3=15



ii) Suppose you have dissected a *Cirrhinus mrigala*. The body length and gut of the fish is 16.8 cm and 172.4 cm. Estimate RLG. How can you understand Herbivores / Carnivores by RLG from your estimation? 7+3

**(P.T.O.)**

(2)

2. i) Identify the following fish food organisms with characters.

5X3=15

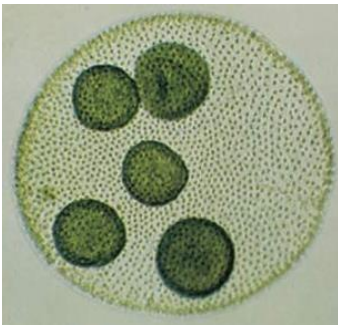
a.



b.



c.



ii) Write the Principle, Reagents and Procedure and OC level in pond soil for determination of organic carbon. 4+4+2

3. i) Draw and label the diagram of accessory respiratory organ of *Heteropneustes fossilis*. 10+5

ii) Write the sources of Chloride ions and Expected level, Requisites and Reagents and procedure for determination of Chloride and Salinity from the Fish-pond Water. 2+2+6

(P.T.O.)

(3)

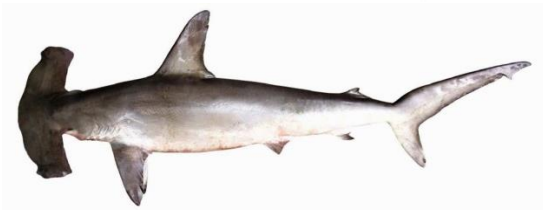
4. i) Identify the following fishes with systematic position and identifying characters. 5X3=15



a.



b.



c.

ii) Draw and label the external morphology of a typical teleost.

5+5

\*\*\*\*\*